

The XS-300 Kiosk is a versatile and innovative solution for the automated key dispensing in establishments such as hotels, residences, or resort complexes. It supports the delivery of conventional keys of all types, ensuring an efficient and secure process for users.

#### ● MAIN FEATURES:

**Configurable capacity:** allows the dispensing of up to 18 keys, adapting to various storage needs.

**Durable metal structure:** made of 2 mm lacquered steel, offering strength and durability, making it ideal for locations that require constant use.

**3.5" touchscreen:** facilitates interaction and navigation through the available functions.

**QR reader and numeric keypad:** integrated to streamline identification and data input.

**Compact and lightweight:** weighing only 15 kg with compact dimensions, it is easy to install and place without taking up too much space.

#### ● TECHNICAL SPECIFICATIONS:

**Power supply:** 110-220 V AC, 50/60 Hz

**Connectivity:** Ethernet / WiFi / (optional) 4G, depending on the model

**Operating temperature:** 0° C to 45° C, for both indoor and sheltered outdoor environments

#### ● INSTALLATION RECOMMENDATIONS:

**Secure mounting:** the XS-300 kiosk can be fixed directly to a stable surface or to the wall, in an area that ensures easy access to the device by the user.

**Outdoor protection:** for areas with high humidity, dust, or exposure to the elements, additional cover or protection for the screen and QR reader is recommended.

#### ● CARE AND MAINTENANCE :

**Cleaning:** regularly clean the touchscreen and QR reader with a soft cloth for proper performance. Avoid using abrasive or corrosive products.

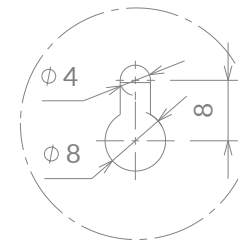
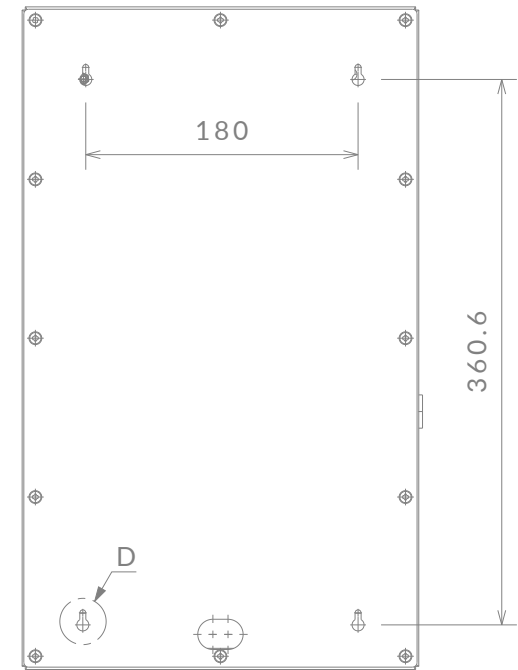
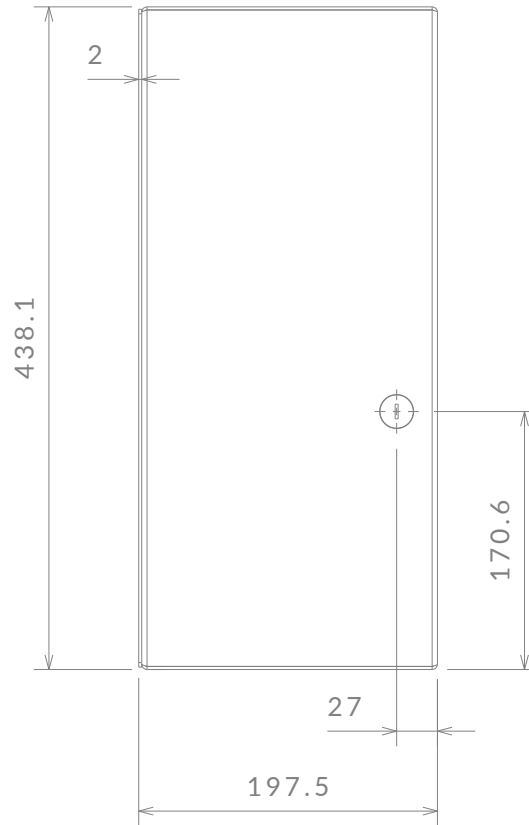
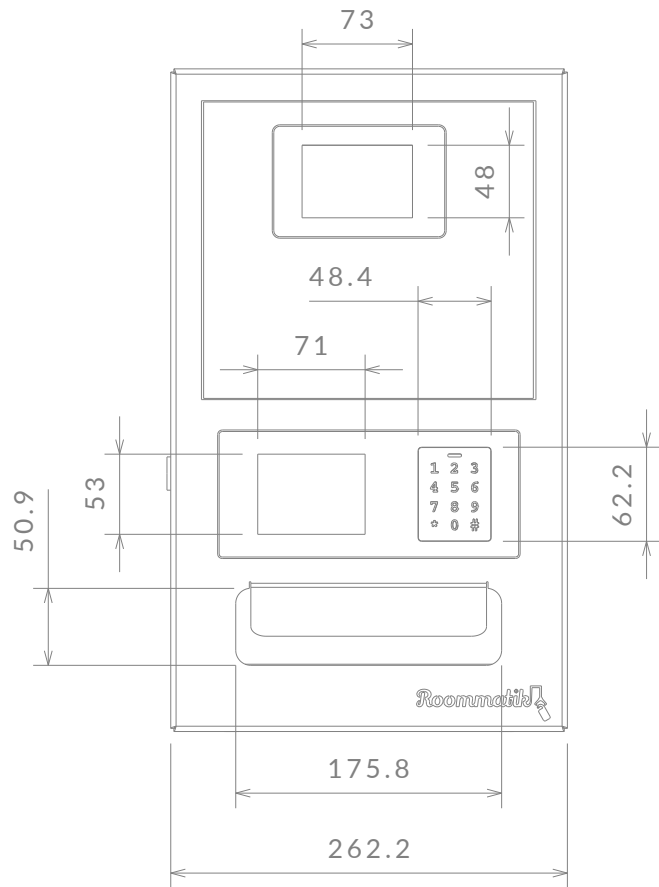
**Periodic inspection:** regularly check the condition of the components and the kiosk's mounting if it is exposed to vibrations or movement.

**Software updates:** install necessary updates to ensure maximum compatibility and efficiency.

# XS-300 KIOSK



# DIMENSIONS



Detail D  
Scale 1:1

XS-300 KIOSK



Scale	1:5
Thickness	2 mm
Weight	15 kg